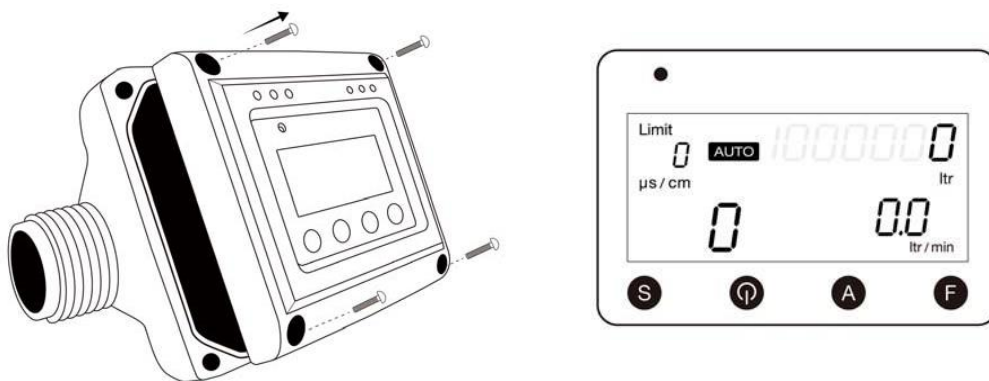


User's Manual of the ES099A Combo Meter

1. Installing battery

Taking out the screws of the front case, put three AAA alkaline batteries into the battery holder.



The front case can be rotated from 90, 180 to 270 degree for better reading.

2. Setting litres or gallons mode

The default setting of the ES099A Combo meter is litre. You can switch the mode from litre to gallon by pressing the button “F” when battery has been inserted. When you hear a “beep”, the setting is switched.

The screen shows “gal / min”.

3. Turn on and turn off

Keep pressing the “P” button for three seconds to turn the Combo meter on or off.

4. Setting TDS or conductivity

The default setting of the ES099A Combo meter is a conductivity mode. The screen shows “uS/cm”.

You can switch the mode between the conductivity and TDS (Total Dissolved Solid) by the pressing the button “P”.

5. Measuring flow

The ES099A Combo meter shows real time flow rate and accumulated volume. The maximum accumulated volume is 1999999 litres (gallons).

6. Manual measuring TDS / Conductivity

Press the “A” button can measure the TDS or conductivity and keep showing the value on the screen.

The maximum TDS and conductivity can be measured is 1999 ppm and 1999 uS/cm.

7. Automatic TDS/Conductivity monitoring

Pressing the “S” button can set the TDS or conductivity value to monitor.

The increment is 10 ppm for TDS and 15 uS/cm for conductivity. Keep pressing the “S” button can reset the setting to be zero.

Once the setting is done, go to set automatic monitoring function. Press the “A” button to do manual test first, then press the “A” button again, the ES099A Combo meter goes into automatic monitoring function.

The screen shows “AUTO” in the middle. The ES099A Combo meter measures the TDS / conductivity for every 10 litres. If the measured value is under the setting value, the green light blinks for 30 seconds.

If the measured value is over the setting value, the red light keeps blinking, and the alarm sounds.

8. Automatic / Manual mode

Pressing the “A” button can switch between the automatic and manual mode for the TDS/Conductivity measuring.

9. Release the alert

By pressing the “A” button to select manual mode will release the alert status.

10. Low battery power alert

When the battery power is low, the empty battery symbol on the screen blinks. Replacing the battery with new ones can release the alert. The last data will be memorized and restored when battery power is off.

11. Specification:

Flow Rate: 3 - 100 litre/min. / 0.8 – 26.4 gallon/min.

Mounting method: Horizontal to Vertical, the Front Panel can be rotated 90 to 270 degree Connection: 1” BSP male

Temperature: 0 to 80°C Working pressure:

Max. 1 MPa Burst pressure: 3 MPa

Materials: Sensor Body: Polyamide 66 with 50% glass fiber Turbine: PA

composite

Turbine shaft: #304 stainless steel Turbine holder.

: POM

TDS/conductivity probe: #304 stainless steel