

elector XL+

Reaction tank for electrochemical water conditioning

Description

The elector XL130 reaction tanks are used for electrochemical treatment of heating and cooling water and are an ideal protection device for closed water systems against water-side corrosion without the addition of chemical corrosion inhibitors. The main function of the elector is an electrochemical treatment of water, which stabilises the pH, scavenges oxygen and purifies the water. This contributes decisively to the quality of the water, allowing corrosion protection of the metals in the system by formation of natural stable layers.

Field of use	Water conditioning in closed water systems, such as heating and cooling systems
Operating temperature	max. 120°C
Operating pressure	10 bar
Test pressure	13 bar
Tank material	Stainless steel 1.4571 / 1.4404 (V4A), pickled and passivated
Insulation	100 mm fleece insulation with plastics cover, color: silver

Selection guide

Model	System volume* max.	Volume estimated**	Assembly	Item no.
elector XL+300	Heating water - 80m ³ Cooling water - 40m ³	~18.5 l/kW Underfloor ~12 l/kW Radiators	Floor	14080
elector XL+500	Heating water - 150m ³ Cooling water - 75m ³			14090

* Without consideration of buffer tanks.

** For old systems with new boilers add approx. 20% to the heating power.

In systems with higher water volume and sub-distribution manifolds we advise to install a larger number of elector reaction tanks distributed equally over the system. In this case the whole system volume is to be divided to the number of elector and their volume usage size.

Scope of delivery

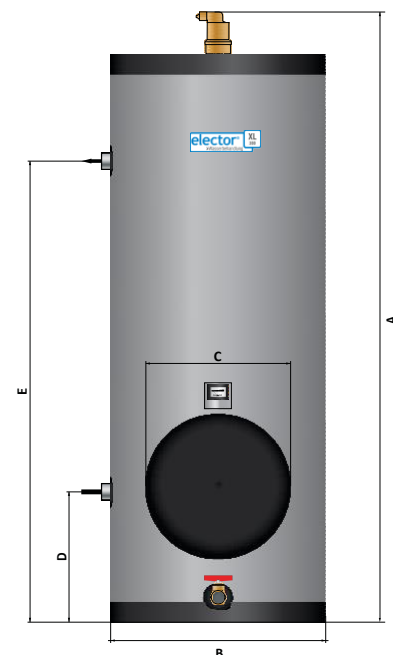
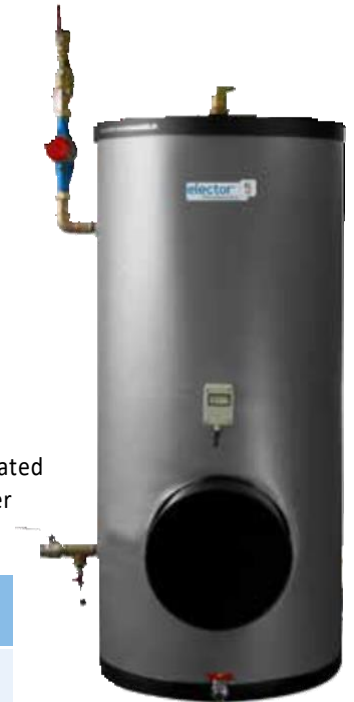
- elector XL+ reaction tank including connectionset.

Note for installation

- The device is for installation in bypass.
- The nominal flow is to be adjusted.
- Material on site: feed pump with ball valve.
- Please refer to the elector user manual.

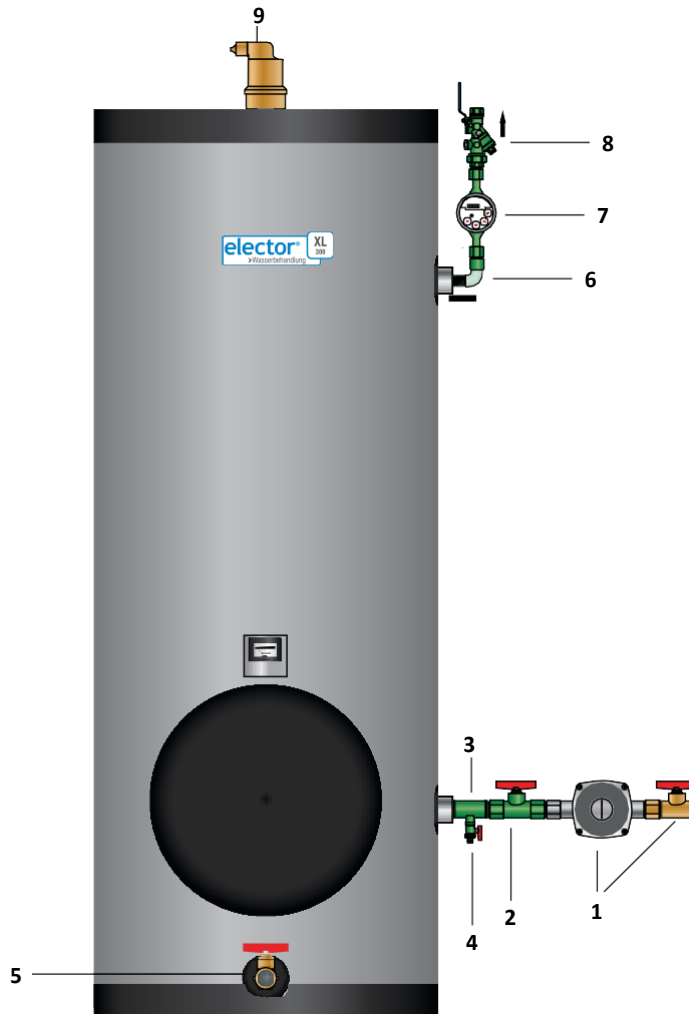
Dimensions

Dimensions in mm		XL+300	XL+500
A	Total height	1837	1877
B	Diameter	750	850
C	Opening for inspection	300	300
D	Floor - Inlet	350	375
E	Floor Outlet	1375	1400
	Flow rate m ³ /h	3	6
	Inlet / Outlet	1 1/4"	1 1/2"



elector XL+

Installation principle including connection set



To be provided on site:

- (1) Pump with ball valve
(e.g. Wilo Stratos 30/1-4)

Included in the supplied connection kit:

- (2) Ball valve
(3) T-piece
(4) Drain valve
(5) Ball valve 1"
(6) Ellbow
(7) Water meter incl. fitting
(8) Automatic flow regulator with ball valve
(9) De-aerator

Connection option

The need for a feed pump (2) depends on the installation site. Please refer to the installation sketches in the user manual.

Optional supplement

In systems with a high oxygen ingress the installation of a microbubble separator in the flow after the boiler is a useful addition. In case of a large amount of circulating particles we recommend the installation of a depth filtration unit or a magnetic dirt separator.

Adjust flow rate:

Factory preset via automatic flow regulator (11).

	elector XL+300	elector XL+500
Flow rate m ³ /h	3	6
recommended pump, control mode constant	z.B. Wilo Stratos 30/1-4	z.B. Wilo Stratos 30/1-6